

NICE National Institute for
Health and Care Excellence

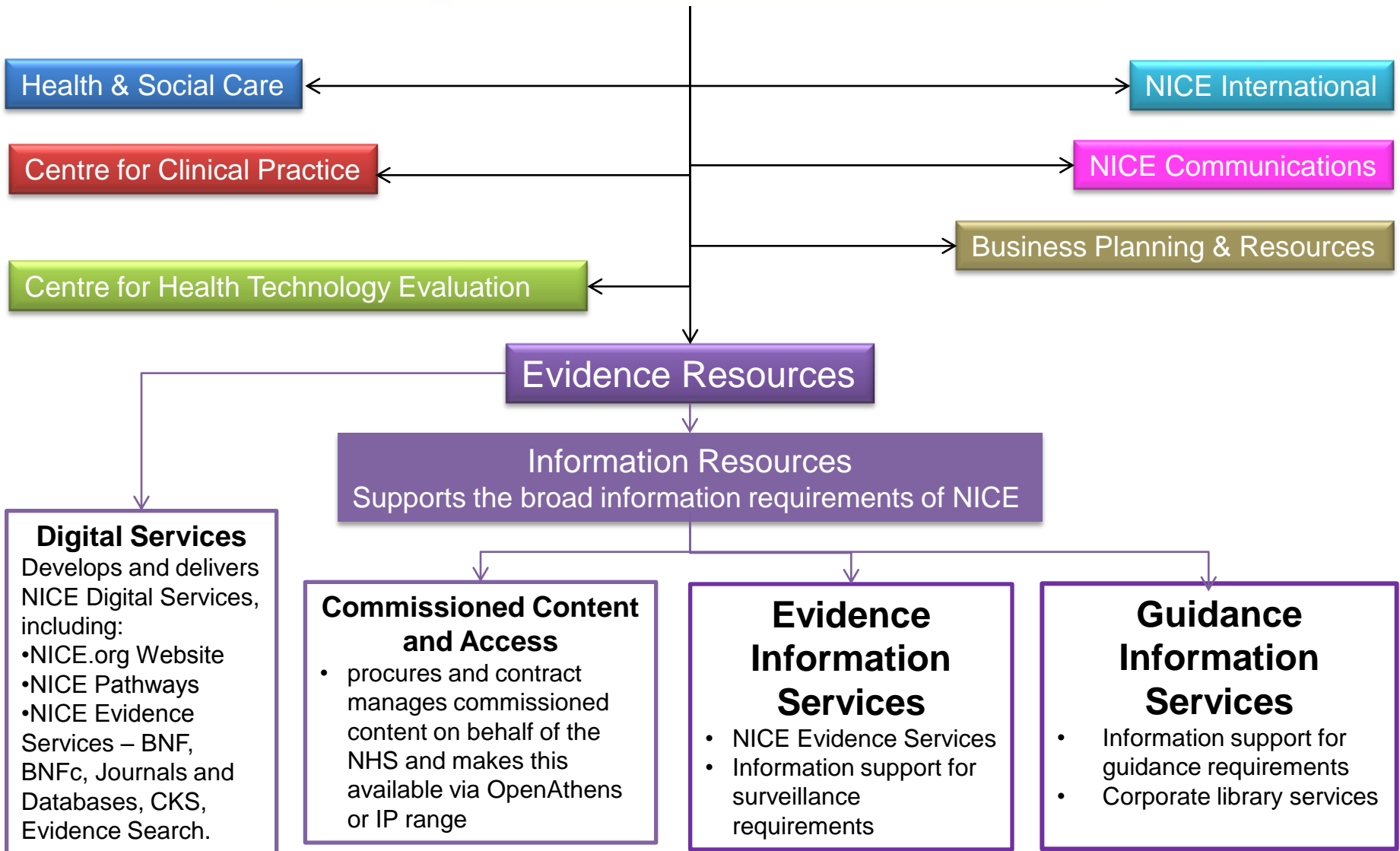
NICE Evidence search

LIHNN Clinical Librarians and Trainers groups meeting –
March 2016

Today's session

- NICE Information Services
- Evidence search:
 - recent changes
 - planned changes
 - advanced searching notes
 - promotional package
- Student champions scheme – scenarios for training
- HDAS update
- What can we do to support you?

NICE National Institute for Health and Care Excellence



Evidence search - changes

- Evidence search has a rolling development programme, with small changes or tweaks being released to the site as they are ready.
- When there are bigger changes due to be released, we will publicise these with as much notice as possible.

Evidence search - changes

- Recent changes:
 - filtering by date
 - single as well as double quotes for phrase searching
- Changes in development:
 - PDF/doc/xls/ppt files highlighted in search results
 - title and URL searching
 - exporting search results
 - new filter presentation
 - search hints if 0 results are returned
 - advanced search page

Evidence search – notes for advanced searchers

- Produced to give some insight into how Evidence search works, explain what happens when different search features are used, and provide some hints/tips for searching.
- <https://www.nice.org.uk/Media/Default/About/NICE-Communities/Library-and-knowledge-services-staff/notes-for-advanced-searchers-jan2016i.pdf>

Notes for advanced searchers

- ranking of results
- word stemming (lemmatisation)
- synonym expansion
- wildcard searching
- phrase searching
- Boolean operators
- stop words
- spelling correction
- UK vs international

Library and knowledge services staff community pages

- <http://www.nice.org.uk/about/nice-communities/library-and-knowledge-services-staff>
- Training materials and help guides:
<http://www.nice.org.uk/about/nice-communities/library-and-knowledge-services-staff/training-materials>

Evidence search – style guide

- In development...
- Will provide: standardised name, strapline, key messages, logo/image, links

NICE Evidence search
Health and social care

Student Champions Scheme

- Developed a package of materials to use with the student champions, which they can select from and personalise as they wish.
- <http://www.nice.org.uk/get-involved/student-champions/nice-student-champion-scheme-resources>
- Scenarios for training sessions

Example scenario

You are a GP. Rob is a 55-year-old man who has recently been prescribed Verapamil for the management of cluster headaches. He has made an appointment to see you because he has noticed the medicine information leaflet recommends against taking it if he has had a previously suffered from Stevens-Johnson syndrome, which he remembers being diagnosed with following a reaction to an antibiotic when he was 40. He would like to check if he should still be taking this medication, or if there are any alternative long-term preventer medications for his cluster headaches.

HDAS - update

HDAS Redevelopment project

- Purpose: to improve the stability and performance of HDAS and create a better user experience
- Costs: split between NICE and HEE
- Technical team: NICE
- Project Board: NICE, HEE x 2, Public Health England
- User reference group: information specialists and clinical input

HDAS - timelines

- Current version
 - early test site, lots of development work going on
- Alpha version – imminent
 - Tested with a restricted group of testers, including library staff
- Beta version – due beginning of April
 - Available to everyone to test – FEEDBACK WANTED
- New live version – due quarter 1 of 2016/17
 - Will run in parallel with old version for a period, to allow a switch-over

Current test version

The screenshot displays the NICE Healthcare Databases Advanced Search interface. At the top left, the NICE logo is followed by the text "Healthcare Databases" and "Advanced Search". On the top right, there is a "Login to OpenAthens" button with a user icon. Below the header, a yellow "New Strategy" button is on the left, and a "Cookies" link with an information icon is on the right. The main content area features a search bar with an information icon and the label "Search" on the left, and a "Search" button on the right. Below the search bar, there is a section for "Databases" with an information icon and the text "Login for all databases". A light blue message box below this section states: "You can only search PubMed without logging in to OpenAthens."

HDAS - improvements

Time saving method for searching

- The new service will be more intuitive which should result in a reduction of time that librarians spend providing training on the system.
- The experience will be more intuitive making the service more accessible to non-specialist users.
- The improved interface will make it easier for users to create search strategies and use many of the other HDAS features available.

HDAS - improvements

Improved performance and stability

- Users will be provided with error handling messages to inform them if there is an error rather than the search strategy taking a long time to process.

HDAS - improvements

Improvement to the search functions

- We have reduced the steps to select which databases to search, and users will now open the site directly on the search page.
- From the search page you will have easy access to the various databases, thesauri and limits as they apply to each database and choices over which fields you want your search to apply to.
- A new feature added is the ability for users to see their search history in isolation or alongside the actual search results.
- User preferences will be remembered, so they only need to be applied once.

Keep in touch

- HDAS – further updates and information
<http://labs.nice.org.uk/hdas-redevelopment>
- Evidence search
<http://www.nice.org.uk/evidence-feedback>

What can we do to support you
and your work?

Questions?