

NICE resources for evidence based practice

Supporting the use of NICE resources to help clinicians adopt evidence into practice

January 2014

Annie Coppel, Implementation Consultant

Learning outcomes

- Able to describe the full range of NICE guidance, standards, and implementation tools
- Able to navigate the NICE website more easily
- Able to describe 3 ways in which you can better support clinicians to use NICE guidance and tools, and contribute to the organisational culture of evidence based practice



The National Institute for Health and Care Excellence (NICE) is the independent organisation responsible for providing national guidance and advice to improve health and social care.

- To identify good practice using the best available evidence
- To help resolve uncertainty for the public, service users and professionals
- To reduce variation in the availability and quality of practice and care



April 2013 – social care guidance and standards

NICE guidelines

- Guidelines
 - Health
 - Public health
 - Social care
 - Medicines practice
 - Staffing
- Health Technologies
 - Technology appraisals (medicines)
 - Interventional procedures guidance
 - Medical technologies guidance (devices and some diagnostics)
 - Diagnostic guidance

“NICE guidance sets the standards for high quality healthcare and encourages healthy living.

Our guidance can be used by the NHS, local authorities, employers, voluntary groups and anyone else involved in delivering care or promoting wellbeing”

Technology appraisals

Technology appraisal guidance are recommendations on the use of new and existing medicines and treatments in the NHS



INNOVATION
HEALTH
AND WEALTH

ACCELERATING ADOPTION AND DIFFUSION IN THE NHS



- **NICE Regulations 2013** - means the NHS is legally required to provide funding and resources for that medicine or treatment, normally within 3 months of guidance publication, for any patient who meets the clinical criteria.
- The **NHS Constitution** sets out patients' rights for access to such medicines and treatments. This is to ensure there is equality in access irrespective of where patients live or are being cared for.

Medicines advice



With the integration of the former National Prescribing Centre into NICE, we now offer a comprehensive suite of advice and support for delivering quality, safety, and efficiency in the use of medicines.

The Medicines and Prescribing Centre at NICE provides support for medicines and prescribing through:

- Advice on medicines optimisation including support for QIPP
- Specific medicines advice, for example on unlicensed and off-label drugs
- Practical tools and materials to aid implementation

Explore the sections below for the new products and services from the Medicines and Prescribing Centre.

Evidence summaries: new medicines



Summaries of the best available evidence for selected new medicines, or for existing medicines with new indications, to inform local NHS planning and decision-making.

[Find out more](#)

Evidence summaries: unlicensed/off-label meds



A new service providing summaries of the best available evidence on selected unlicensed and off-label medicines, designed to meet demand for information to inform local NHS planning and decision-making.

[Find out more](#)

Good practice guidance



Advice to support best practice in medicines management and use in the NHS, including good practice guidance on developing local medicines formularies.

[Find out more](#)

Coming soon

Evidence summary: new medicine: - Trastuzumab subcutaneous as (neo) adjuvant for early breast cancer and metastatic breast cancer

Evidence summary: unlicensed/off-label medicines - Magnesium glycerophosphate oral - hypomagnesaemia

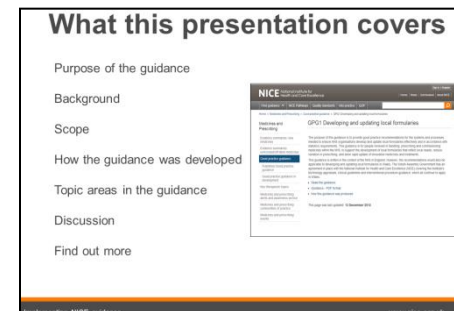
QIPP - Key Therapeutics Topics

Good practice guidance

- Advice and guide good practice for those involved in handling, prescribing, commissioning and decision-making about medicines

Published

- Developing and updating local formularies (Dec 12)
- Patient Group Directions (July 13)



In development:

- Antimicrobial stewardship....due May15
- The safe use and management of CDs... due March 16

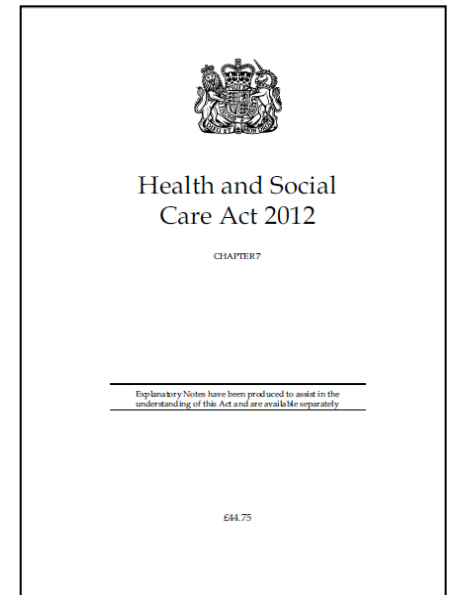
Health and Social Care Act

NICE may be directed to **prepare statements of standards** in relation to the provision of:

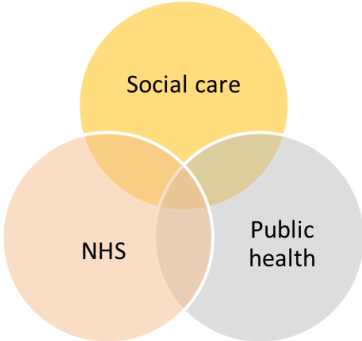
- a) NHS service
- b) Public health services or
- c) Social care in England.

In discharging its duty, the NHS Commissioning Board/Secretary of State **must have regard to the quality standards prepared by NICE.**

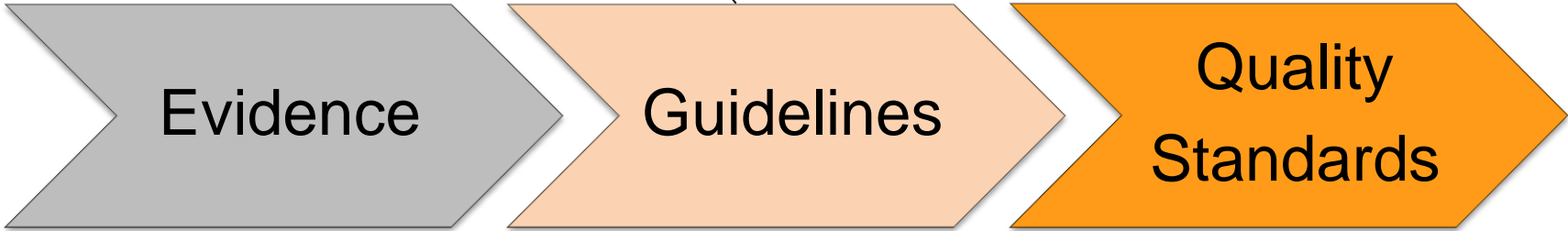
Organisations improving the quality of health services **must have regard to the quality standards prepared by NICE.**



Quality standards for quality improvement



A set of systematically developed recommendations to guide decisions for a particular area of care or health issue



Research studies - experimental and observational, quantitative and qualitative, process evaluations, descriptions of experience, case studies

A prioritised set of statements designed to drive and measure quality improvement in specific areas of care.

Quality Standard for COPD

Quality statement 1: Diagnosis
Quality statement 2: Management planning
Quality statement 3: Inhaled and oral therapies
Quality statement 4: Annual comprehensive assessment
Quality statement 5: Smoking cessation support
Quality statement 6: Pulmonary rehabilitation
Quality statement 7: Management of exacerbations
Quality statement 8: Initial assessment for long-term oxygen therapy
Quality statement 9: Review of long-term oxygen therapy
Quality statement 10: Care in hospital
Quality statement 11: Non-invasive ventilation in hospital
Quality statement 12: Review within 2 weeks of discharge
Quality statement 13: Palliative care
Using the quality standard

- Statements
 - People with COPD who smoke are regularly encouraged to stop and are offered the full range of evidence-based smoking cessation support
- Measures
 - Evidence of local arrangements to provide the full range of evidence-based smoking cessation support (**structure**)
 - The proportion of people with COPD who smoke who are offered the full range of evidence-based smoking cessation support (**process**)
 - Smoking quit rate for people with COPD attending NHS stop-smoking services (**outcome**)

Quality Standard for COPD

Quality statement 1: Diagnosis

Quality statement 2: Management planning

Quality statement 3: Inhaled and oral therapies

Quality statement 4: Annual comprehensive assessment

Quality statement 5: Smoking cessation support

Quality statement 6: Pulmonary rehabilitation

Quality statement 7: Management of exacerbations

Quality statement 8: Initial assessment for long-term oxygen therapy

Quality statement 9: Review of long-term oxygen therapy

Quality statement 10: Care in hospital

Quality statement 11: Non-invasive ventilation in hospital

Quality statement 12: Review within 2 weeks of discharge

Quality statement 13: Palliative care

Using the quality standard

- Statements

- People with COPD who smoke are regularly encouraged to stop and are offered the full range of evidence-based smoking cessation support

- Measures

- Evidence of local arrangements to provide the full range of evidence-based smoking cessation support (**structure**)

- The proportion of people with COPD who smoke who are offered the full range of evidence-based smoking cessation support (**process**)

- Smoking quit rate for people with COPD attending NHS stop-smoking services (**outcome**)

Support for implementation

We provide a range of resources to help maximise uptake and use of evidence and guidance.

Into Practice Guide

Self assessment/Audit tools
Costing reports and templates
Online learning resources
Clinical case scenarios
Academic detailing aids
Slide sets
Forward planner
Podcasts
Shared learning database
Medicines Information
NICE and BNF apps
Field team

The screenshot shows the NICE Autism Into Practice Guide interface. On the left is a navigation menu with categories: Find guidance, Population groups, Children and young people, Tools and resources (highlighted), Costing, Local practice, Evidence, History, Timeline, and Documents. The main content area is titled 'Autism' and features tabs for 'Guidance' and 'Tools and resources' (selected). Below the tabs, it displays 'NICE guidelines [CG170] Published date: August 2013' and 'Tools and resources' which includes a description: 'Tools to help you put the guidance into practice. Includes slide sets, audit tools, uptake reports and recommended research'. There are three main sections: 'Quick reference' with links for 'Autism' and 'Recommendations'; 'Related quality standards' with a link for 'Autism (QS51)'; and 'Research recommendations' with a link for 'Research recommendations information'. Below that is a section for ''Do not do' recommendations' with a link for ''Do not do' recommendations information'. At the bottom right, there is a 'Shared learning' section. The interface also includes 'Share' and 'Print' buttons at the top right. The Windows taskbar at the bottom shows the Start button, taskbar icons for Chrome, Edge, File Explorer, PowerPoint, Word, and Outlook, and a system tray with the time 13:46 and date 22/09/2018.

www.nice.org.uk/about/what-we-do/into-practice

Getting clinicians involved in developing evidence based guidance

Current NICE consultations	Comment on our draft guidance and quality standards
Stakeholder registration	Ensure your organisation is registered so you can be alerted about consultations and submit comments
Join a NICE committee or working group	NICE committees consist of a wide range of healthcare professionals and vacancies are listed on our website
Patient and public involvement	There is a range of opportunities for service users to get involved, with full support from our PPI team
Fellows and Scholars	Opportunities for healthcare professionals' personal development by becoming ambassadors for NICE

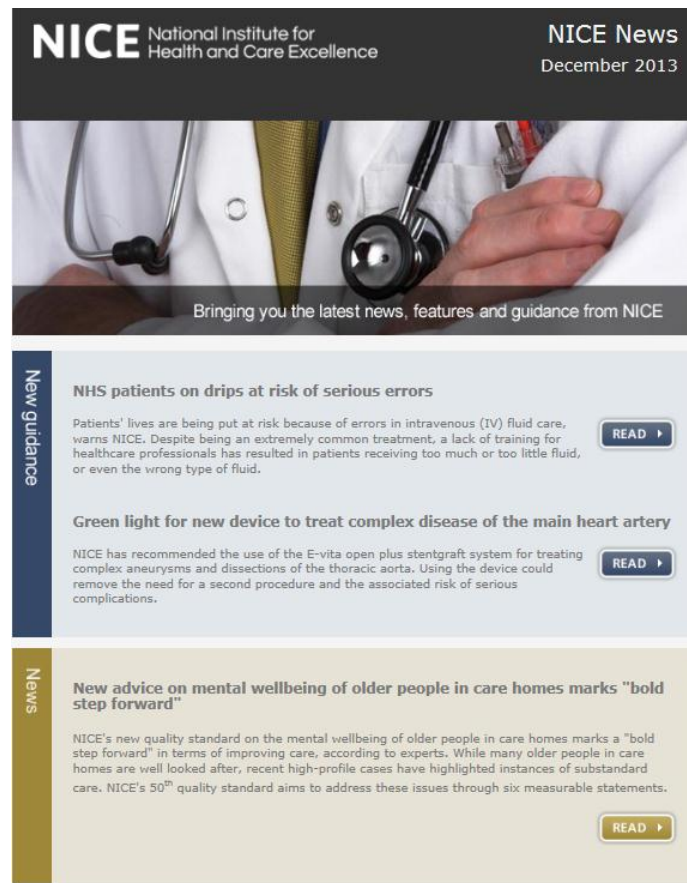
www.nice.org.uk/getinvolved

Keeping up to date with the latest from NICE...

- Sign up for NICE news
www.nice.org.uk/newsletter
- Contains details of all guidance, quality standards and tools published that month
- NICE Evidence Services
www.evidence.nhs.uk
- NICE Pathways
<http://pathways.nice.org.uk>



- 25,000+ people now follow us on Twitter for guidance updates
@NICEcomms



The image shows a screenshot of the NICE News newsletter for December 2013. At the top, the NICE logo (National Institute for Health and Care Excellence) is on the left, and "NICE News December 2013" is on the right. Below this is a photograph of a doctor in a white coat with a stethoscope around their neck. A dark banner at the bottom of the photo reads "Bringing you the latest news, features and guidance from NICE". The main content area has a vertical label "New guidance" on the left. It features three articles, each with a "READ" button:

- NHS patients on drips at risk of serious errors**
Patients' lives are being put at risk because of errors in intravenous (IV) fluid care, warns NICE. Despite being an extremely common treatment, a lack of training for healthcare professionals has resulted in patients receiving too much or too little fluid, or even the wrong type of fluid.
- Green light for new device to treat complex disease of the main heart artery**
NICE has recommended the use of the E-vita open plus stentgraft system for treating complex aneurysms and dissections of the thoracic aorta. Using the device could remove the need for a second procedure and the associated risk of serious complications.
- New advice on mental wellbeing of older people in care homes marks "bold step forward"**
NICE's new quality standard on the mental wellbeing of older people in care homes marks a "bold step forward" in terms of improving care, according to experts. While many older people in care homes are well looked after, recent high-profile cases have highlighted instances of substandard care. NICE's 50th quality standard aims to address these issues through six measurable statements.

**Finding what you want
quickly and easily**

Search...



News

About

Get Involved

Communities

Different ways to filter guidance

Leave Feedback

Find guidance

Guiding high quality health and social care

Pathways, guidance quality standards and NICE Evidence

Conditions and diseases

Health protection

Lifestyle and wellbeing

Population groups

Service delivery, organisation and...

Settings and environment

Consultations

NICE's current consultations on guidance and other issues

View consultation list

In development

NICE guidance and quality standards currently in development

View in development list

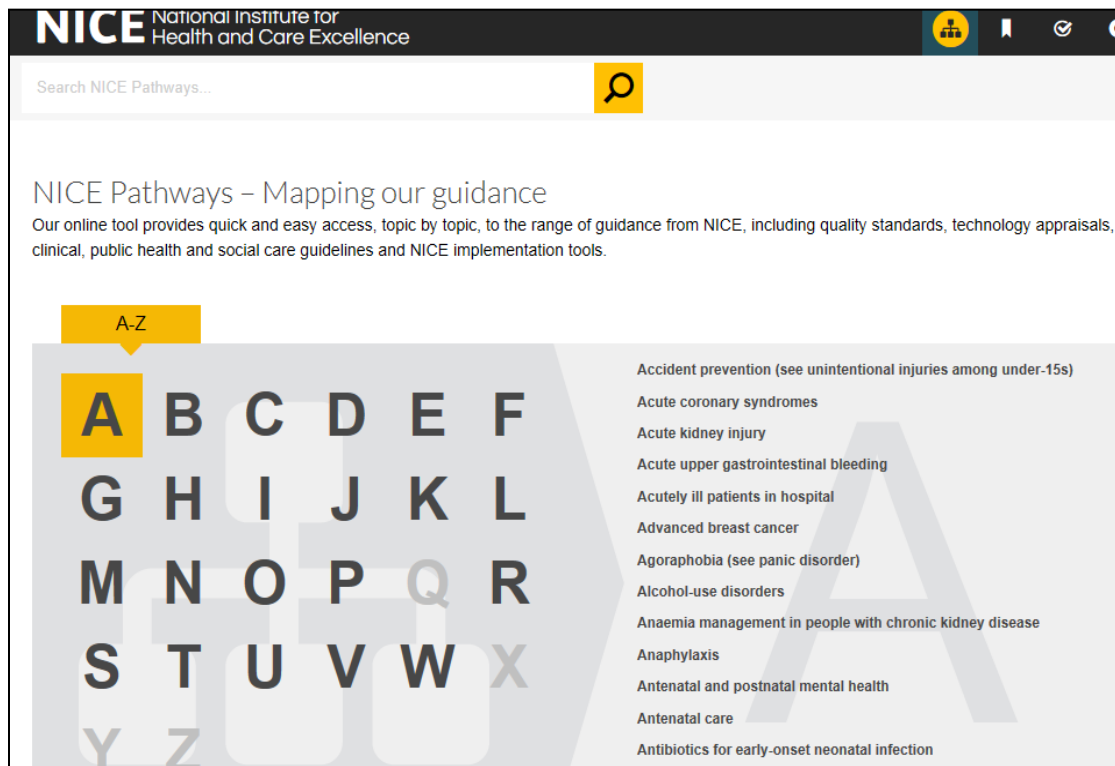
Scroll down for guidance by type, local practice collection and NICE Advice

NICE that can help identify cost savings and improvements

View savings and productivity

NICE Pathways

An easy and intuitive way of accessing a range of information from NICE about health, public health and social care. They include up-to-date NICE guidance, quality standards and related information



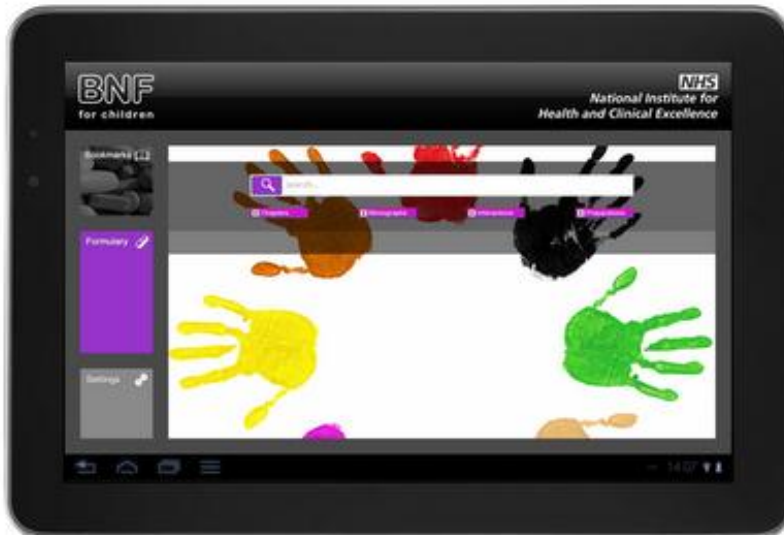
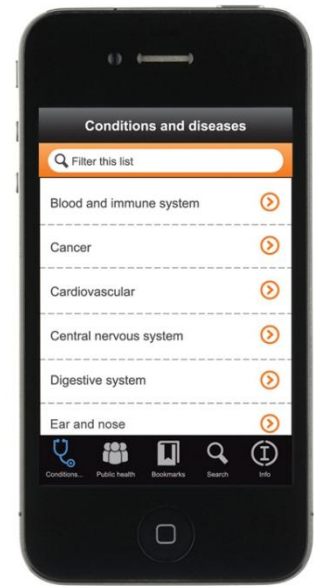
Features:

- Pathway information
- Information for the public
- Implementation support tools
- Quality standards
- Source guidance
- Related guidance
- Save and print

<http://pathways.nice.org.uk/>

Information at your fingertips....apps

- Android smartphone and tablets
- iPhone and iPads
- Browse
- Rapid searches
- Bookmark for offline use
- Receive automatic updates



Available via:

- NICE website
- Apple App Store
- Google Play Store

Signposting library users to resources for adopting evidence into practice?

- Working with trust NICE lead/Medical Director
- Becoming ambassadors for evidence based implementation tools
- Embed support tools into searches
- Promote resources for finding information
- Incorporate into training and induction
- Facilitate access to resources
- Raising your profile within the wider organisation



What will you change following today's session?

What is the most useful thing you have learnt today?