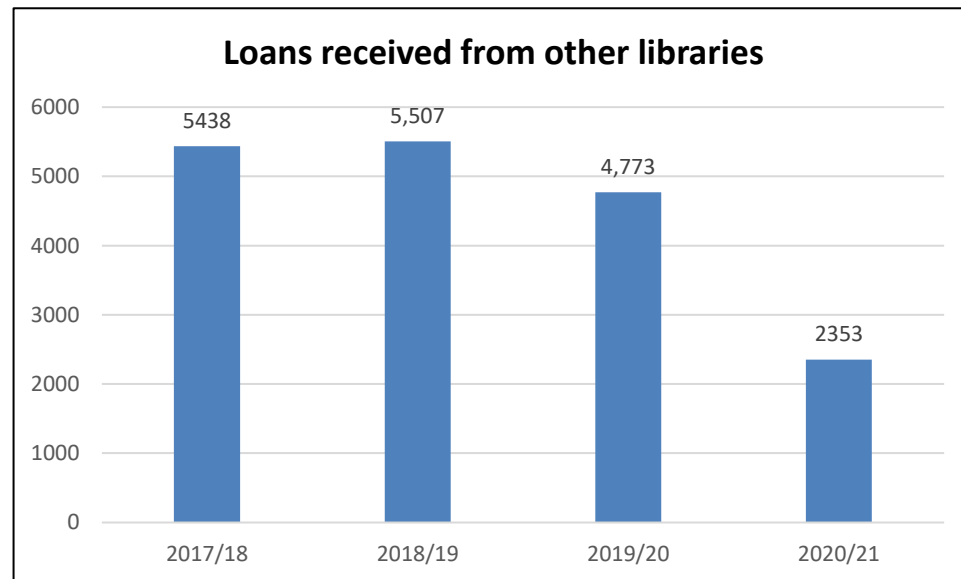
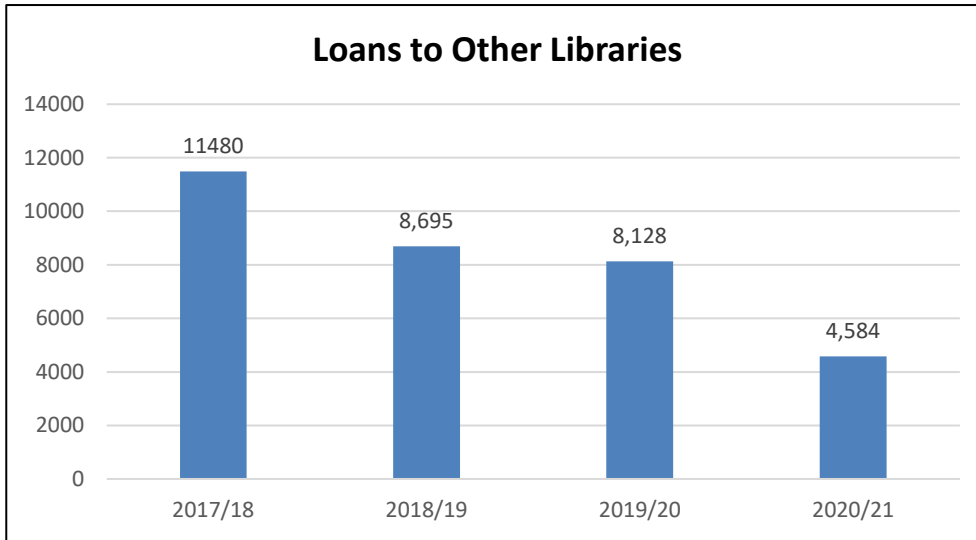
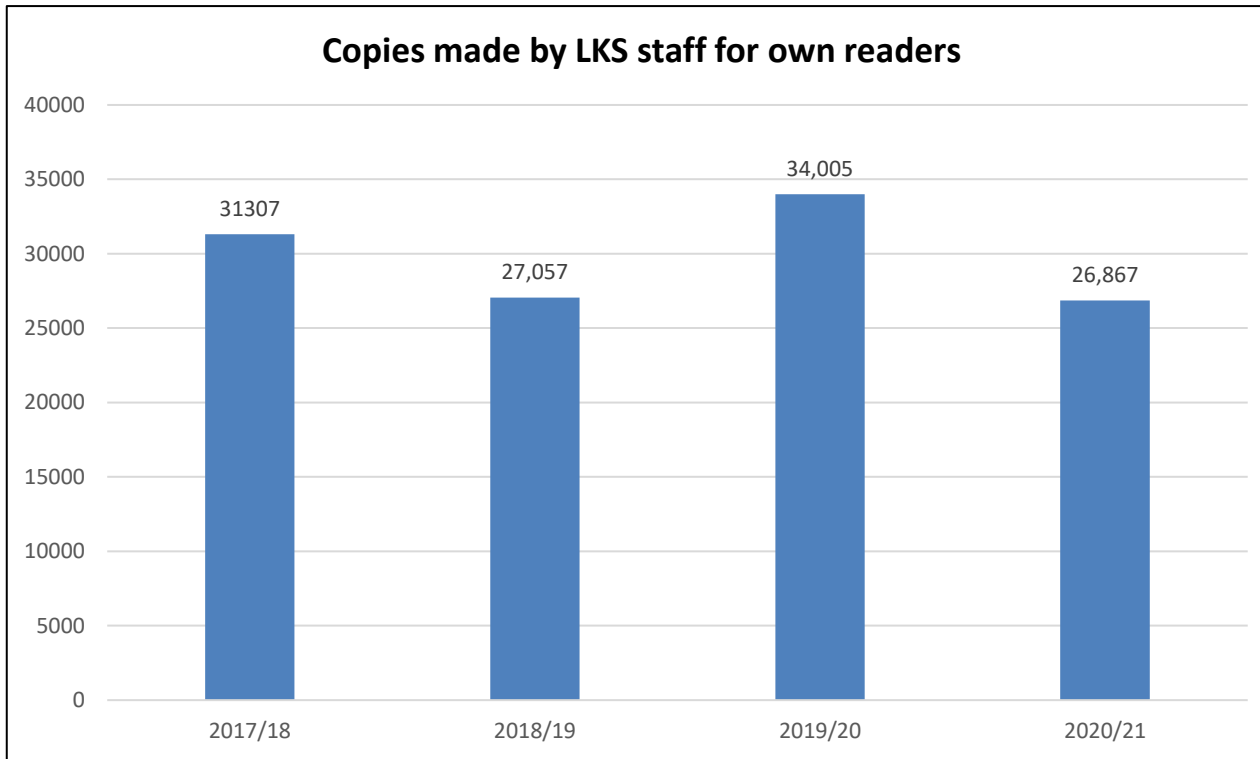


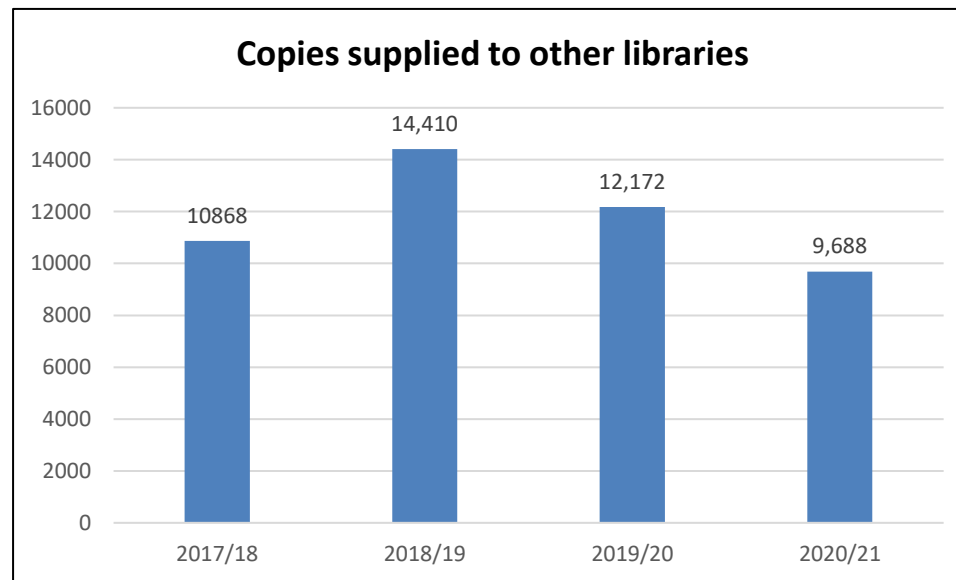
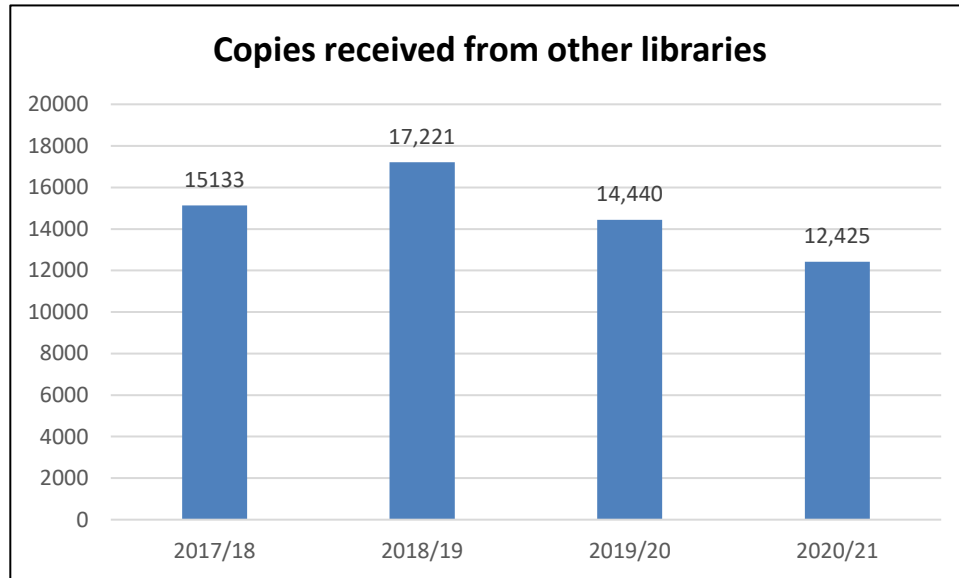
# HEE North libraries – data from Annual Statistics collection



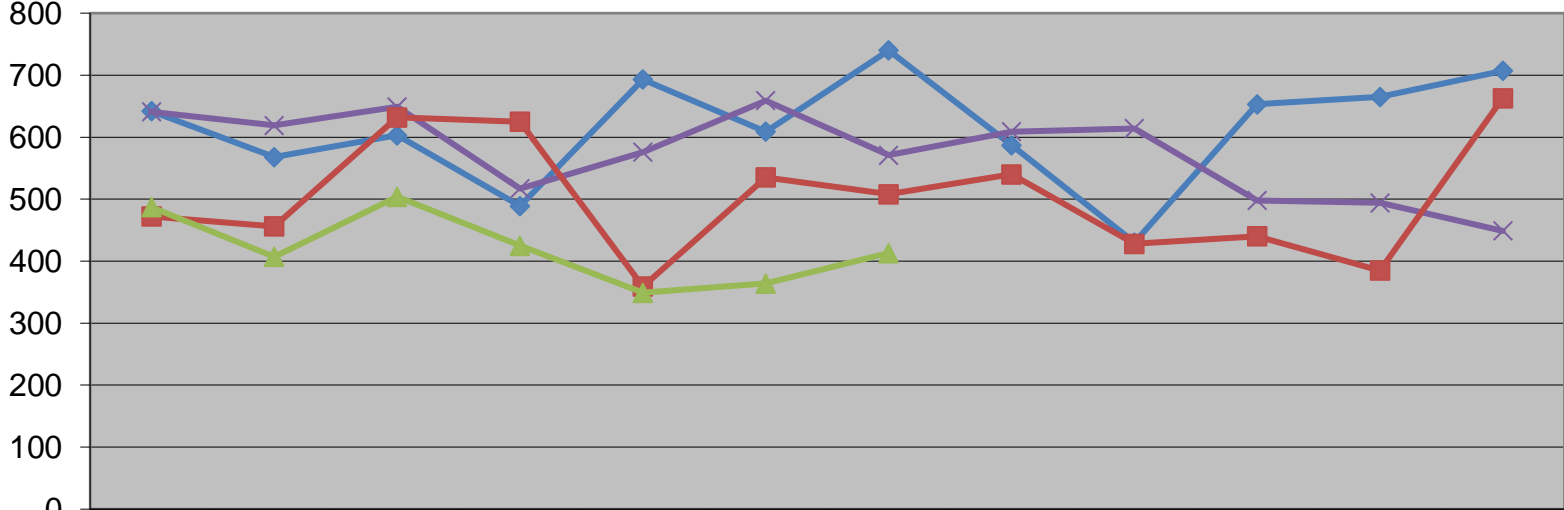
## HEE North libraries – data from Annual Statistics collection



# HEE North libraries – data from Annual Statistics collection



**Union List ILL Activity April 2018 to October 2021**



	Apr	May	Jun	Jul	Aug	Sep	Oct	Nov	Dec	Jan	Feb	Mar
◆ 2018/19	642	568	603	489	693	609	740	587	430	653	665	707
✕ 2019/20	641	619	649	517	576	659	571	609	614	498	494	449
■ 2020/21	472	456	632	625	359	535	508	540	428	440	385	663
▲ 2021/22	487	407	504	425	349	364	413					

**Libraries currently unable to supply books on interlibrary loan:**

17 library sites (13 organisations)

This is 16% of the 108 library sites in PANDDA